

# The Mayoral Inquiry into London Schools 20.06.2012

Steve Brace

Head of Education and Outdoor Learning  
Royal Geographical Society (with IBG)

.....

# The Royal Geographical Society (with IBG)

.....

**Royal  
Geographical  
Society**  
with IBG

Advancing geography  
and geographical learning

*Advancing geographical science*



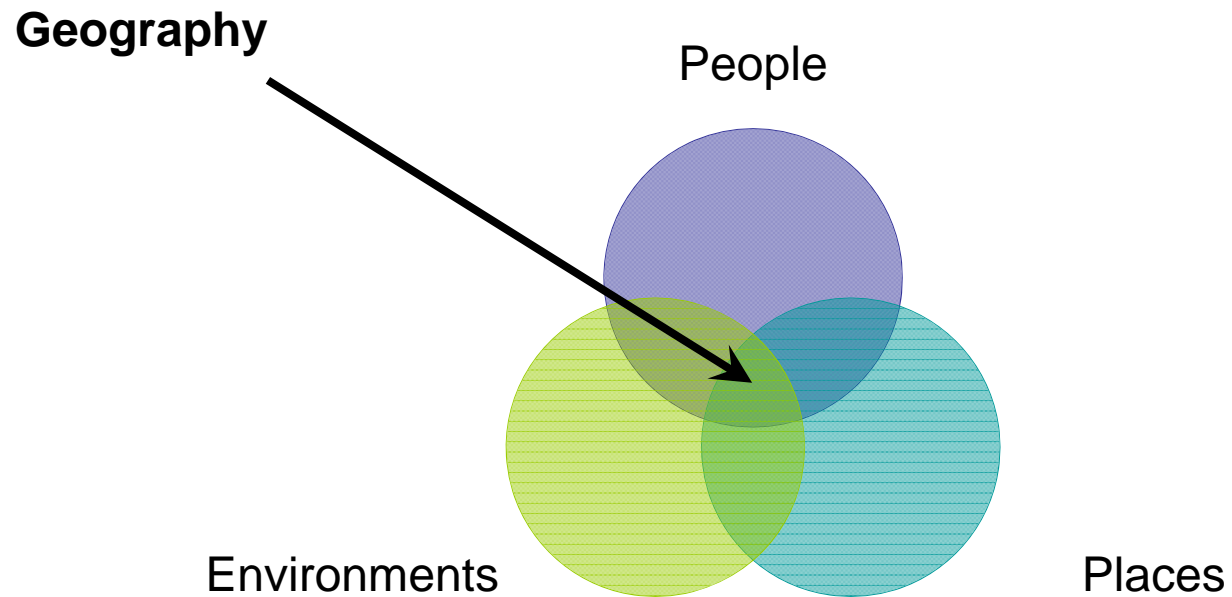
.....

# What is geography?

.....

**Royal  
Geographical  
Society**  
with IBG

Advancing geography  
and geographical learning



.....

# For schools the Society provides

.....

**Royal  
Geographical  
Society**  
with IBG

Advancing geography  
and geographical learning

- Online resources
- Fieldwork support
- Subject update CPD for teachers
- Promoting geography's relevance to further study and careers
- [www.rgs.org/schools](http://www.rgs.org/schools)

.....

# The importance of fieldwork

.....

**Royal  
Geographical  
Society**  
with IBG

Advancing geography  
and geographical learning



.....

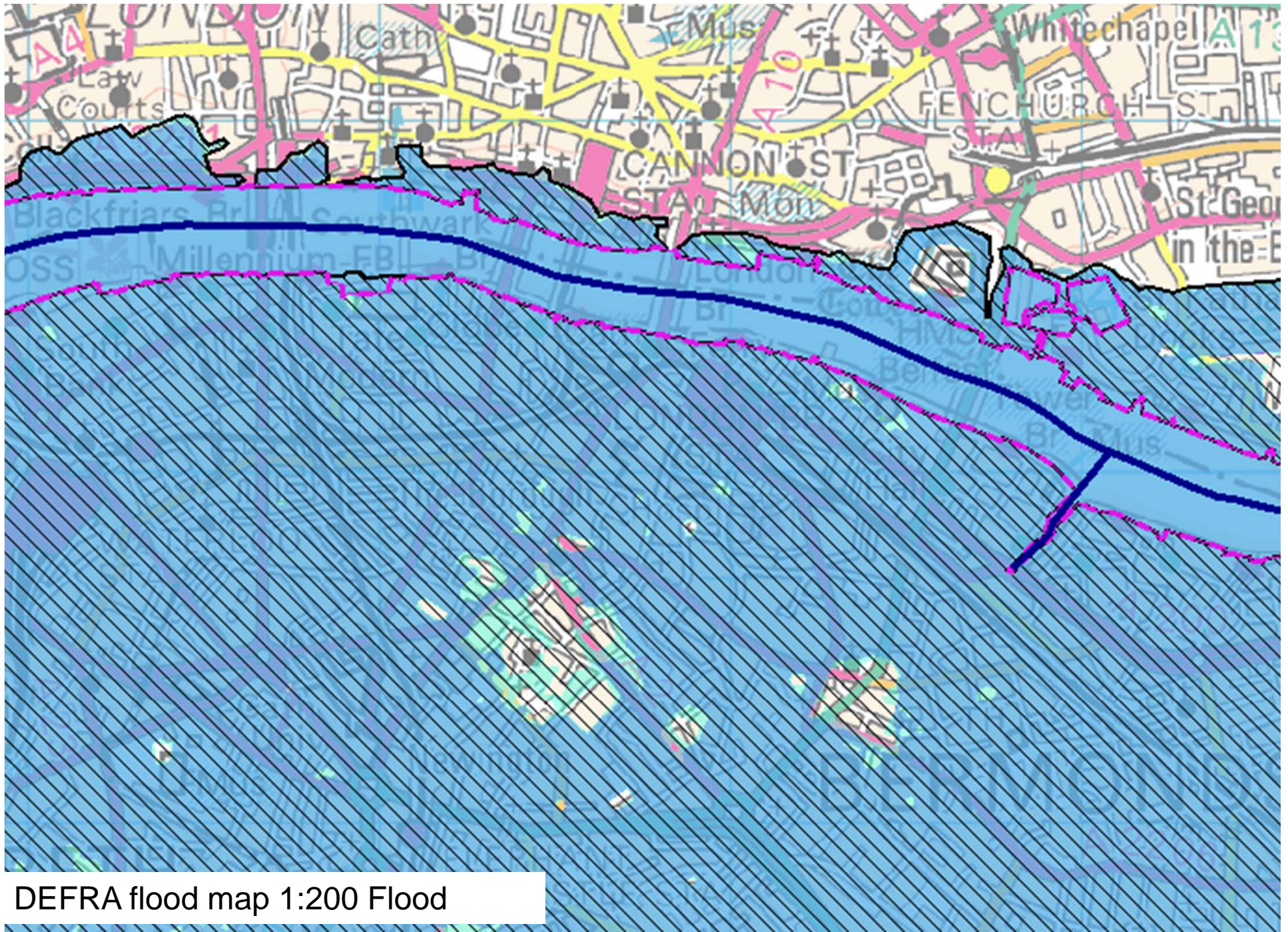
# London: a geographical resource

.....

**Royal  
Geographical  
Society**  
with IBG

Advancing geography  
and geographical learning

- A global city of 7.8 million people, speaking 300 languages
- On the edge of the last ice-age, the built and natural environment
- From suburbs to shards, airports to air quality, or regeneration to the River Thames



DEFRA flood map 1:200 Flood

.....

# A geography of difference

.....

- Not only a difference in educational achievement across London, but also in the uptake of certain subjects. This isn't *just* a MFL or STEM issue.
- In Enfield 117 (out of 2000) pupils sat a geography A Level, whilst in Tower Hamlets only 9 sat this exam (out of 1000 students).



.....

# Why study geography?

.....

- At GCSE an English Baccalaureate subject
- At A Level a Russell Group “facilitating subject”
- Geog graduates low levels of graduate unemployment
- London undergrads work as *Geography Ambassadors*

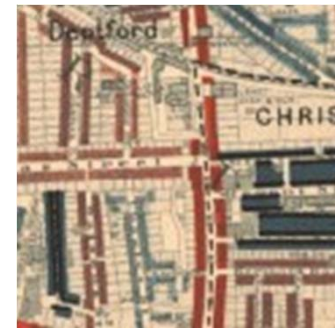
# Beyond the school gate...

**Royal  
Geographical  
Society**  
with IBG

Advancing geography  
and geographical learning

Discovering London's landscapes  
through walks:

- Bexley village, valued at £20 in 1086
- Deptford and Charles Booth's poverty maps
- The riverside from Festival Hall to Jamaica Road
- [www.discoveringbritain.org](http://www.discoveringbritain.org)



# Crossing Continents: Connecting Communities

**Royal  
Geographical  
Society**  
with IBG

Advancing geography  
and geographical learning

- Rediscovering shared geographies and histories.
- 1 million maps, 500K photographs



.....

# What schools can do ...

.....

- The study of London, locally & city wide, as part of the core knowledge for its pupils should gain
- London as a resource: fieldwork, its institutions, connecting with London's universities (pupil premium)
- Promote subjects that 'count' and will pupils progress into further study and careers
- [S.brace@rgs.org](mailto:S.brace@rgs.org) [www.rgs.org](http://www.rgs.org)