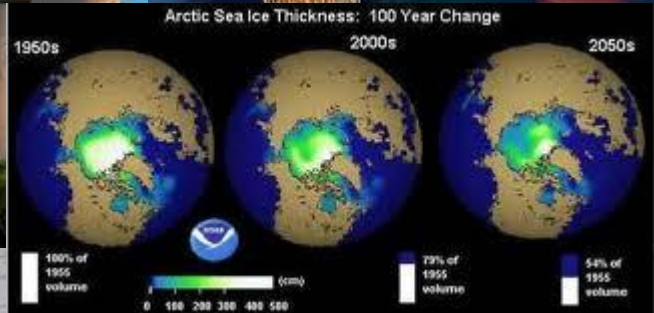


A photograph of a classical building with a portico supported by several white columns. The building is set on a cobblestone street. The sky is clear and blue. The text is overlaid on the image in white, bold, sans-serif font.

Social Enterprise in Education

enabling young people to build
a world that works

What lies ahead?



A Case for Social Enterprise

A photograph of a grand, classical building with a portico supported by several tall, white columns. The building is set on a cobblestone street. The scene is captured in a soft, golden light, likely during sunrise or sunset, with long shadows cast across the pavement. The sky is a clear, pale blue. The overall atmosphere is one of historical grandeur and stability.

- There are at least 75m unemployed young people around the world.
- The effect of the global financial instability we have created is plain for all to see.
- Our energy resources are running low.
- The gap between rich and poor gets ever more pronounced.
- Our climate and weather systems are becoming ever more severe.

Is Social Enterprise the Answer?

- Social enterprises are flouting the fiscal gloom to grow faster than the rest of the UK economy, the latest RBS SE100 Index reveals.
- The average growth of the start-up enterprises on the Index was 81%, up from 35% the year before.
- The Social Enterprise sector had an annual turnover of more than £1b in 2011.
- The average profit for enterprises on this year's index was £110,000, an increase of 26% from £87,000 the previous year.
- Environment and recycling, health and social care, and employment and training were the sectors that reported the highest growth figures.

The Real Ideas Organisation - RIO

- Purpose – to enable young people to build a world that works.
- Using a challenge based, creative and socially enterprising approach we enable schools, colleges and other organisations to create real and purposeful learning and working opportunities for young people.

The logo consists of the letters 'RIO' in a bold, sans-serif font. The letters are filled with a dark purple color and have a 3D effect, appearing to rise from a white surface. The 'O' is a solid circle.

Real Ideas
Organisation

The logo consists of the letters 'RIO' in a bold, sans-serif font. The letters are filled with a dark purple color and have a 3D effect, appearing to rise from a white surface. The 'O' is a solid circle.

Real Ideas
Organisation

The logo consists of the letters 'RIO' in a bold, sans-serif font. The letters are filled with a dark purple color and have a 3D effect, appearing to rise from a white surface. The 'O' is a solid circle.

Real Ideas
Organisation

How is SE different?

- Starts with a different purpose
- Ends with a triple bottom line:
- **PEOPLE + PLANET + PROFITS**



A Case for SE and Young People

A photograph of a grand, classical-style building with a portico supported by several tall, white columns. The building is set on a cobblestone street. The scene is captured in soft, warm light, likely during the golden hour of sunrise or sunset, with long shadows cast across the pavement. The sky is a clear, pale blue.

- Prepare young people for the world we live in.
- Equip young people with business and enterprise as a tool.
- Connect YP with what matters to them.
- Create exposure to a wide range of options.

What **RIO** believes

Real Ideas
Organisation

- **Young people are natural social entrepreneurs.**
- **Social Enterprises have an important role to play in creating a world that works.**
- **People are motivated by more than money.**
- **Our future rests on doing things differently.**
- **Social Enterprises are exciting, purposeful, dynamic organisations to work for.**

A Case for SE in Education



- Great way to make learning more exciting, real and purposeful.
- SE connects YP to what matters for them and increases motivation.
- Adding SE to subjects increases student achievement and creates more attractive offer.
- SE naturally enhances reputation and image of institution.

So what do **RIO** actually do?

Real Ideas
Organisation

- **Set up School Social Enterprises;** Just Beez, College Rd, Xtravert, Plymstock Trading Company, Sidmouth Smile, US
- **Deliver and support challenge based real and purposeful learning;** Houses and Homes, Smethwick market, Hele's Street Food.
- **Enable colleges and schools to generate unrestricted income from previously unrecognised sources;** The Castle school, Fusion Festival, Sir John Hunt Learning Campus
- **Social Enterprise Community Hubs;** Devonport Guildhall, MAP, Sparkwell, Robinswood.
- **RIO Training** – developing skills to deliver SE learning

Plymstock Student Union

- Raising profile and attracting students.
- Enterprising approach to Student Council. US brand.
- 4000 Facebook likes, front page local press, QR campaign, local business networking, events calendar, merchandising.

Plympton, Plymstock & Ivybridge NEWS
Friday, January 11, 2013
Weekly newspaper delivered free to 25,021 homes (Audited distribution figures January to December 2011)

Moorland Heating Limited
Heating & Gaswork Specialist
Tel. 01752 338810 Mob. 07793 148902
www.moorlandheating.co.uk
7 Year Guarantee on selected boilers

Schools pioneer a student union
by AMY McSWENEY
Sixteen members of the Plymouth School Students Union have all become part of Plymouth's first ever student union. The union was the result of a meeting of school headteachers and parents and is the first of its kind in the UK. The union, which was formed in December, sees the students represent themselves as an organisation. Schools' services led to 300 facilities and link up with... Turn to page two

AXIFIRST 22-22-22
GIVING YOU WITH A 24 HOUR ON-DEMAND TAXI SERVICE

Plymouth College - Ecovation

- Set out to tackle domestic food waste and encourage birds in urban areas.
- Designed the Eco-Feeder
- Sold 400 Eco-Feeders generating £4000 income.
- They won the Young People's Social Enterprise Of The Year Award for England 2011.



RIO's Work

Real Ideas Organisation

- Victoria Park – Members and Partners scheme generating unrestricted income.
- Marine Academy Plymouth – Social Enterprise Community Hub
- Bristol University and the SEQ



How the SEQ works



Social Enterprise Qualification

The Social Enterprise Qualification (SEQ) provides structure, encouragement and accreditation for budding Social Entrepreneurs of any age.

It builds ethical enterprise skills and gives learners the confidence to make positive social change for themselves and others.

The SEQ is creating a generation who think and act differently about the challenges of today's world.

For more information <http://seq.realideas.org/>

Contacts?

- Jonathan Clitheroe—
jonathan.clitheroe@realideas.org
- RIO Training and Events -
<http://schoolsservice.realideas.org/node/2358>
- Social Enterprise Qualification -
<http://seq.realideas.org/>