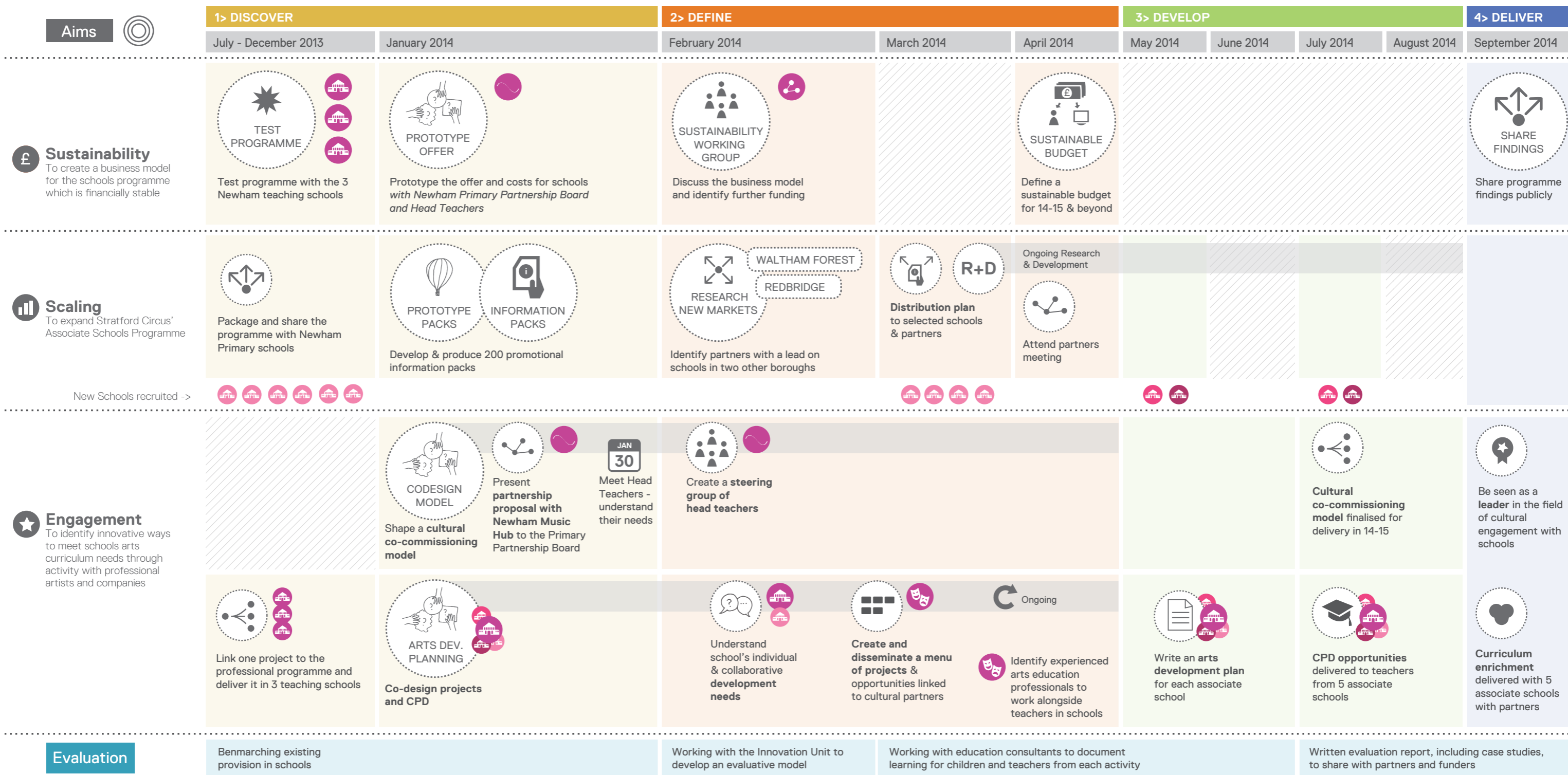


# Stratford Circus Associate Schools Programme

Phase 1 process. July 2013 - September 2014



## Partnerships

- Newham**  
London Borough of Newham, CYPS 0-19 Team  
Newham Partnership Working - Steering group of school responsible for CPD  
NAPH - Newham Association of Primary Heads
- A New Direction Innovation Unit**
- Touring international work**  
In summer 2014 Aracaladanza, part of a Moko Consortium tour, through Sadlers Wells

- Schools**
  - Newham teaching schools
  - New associate schools
  - Newham schools
  - Waltham Forest schools
  - Redbridge schools

- Education consultants**
  - Andrew Mutter - Stratford Circus Strategic Education Advisor & visual arts specialist
  - Catherine McGill - Visual arts & education specialist

- Artistic partners and organisations**
  - Co-design Project**  
Jane Wheeler - Singing (associate artist)  
Ray Downing - Theatre (associate artist)  
Cristina Ottonello - Visual arts  
Naomi Cortes - Writer & theatre  
East London Dance - Dance  
Oily Cart - Children's Theatre Company  
Newham Music Hub

- 1 week project**  
Sadlers Wells - Dance  
Bootworks Theatre  
Theatre Rites  
Fevered Sleep
- R+D (twice a year)**  
Filskit Theatre  
Children's Theatre Company (associate company)  
Tea and Dance for Little People  
Children's Theatre Company (associate company)