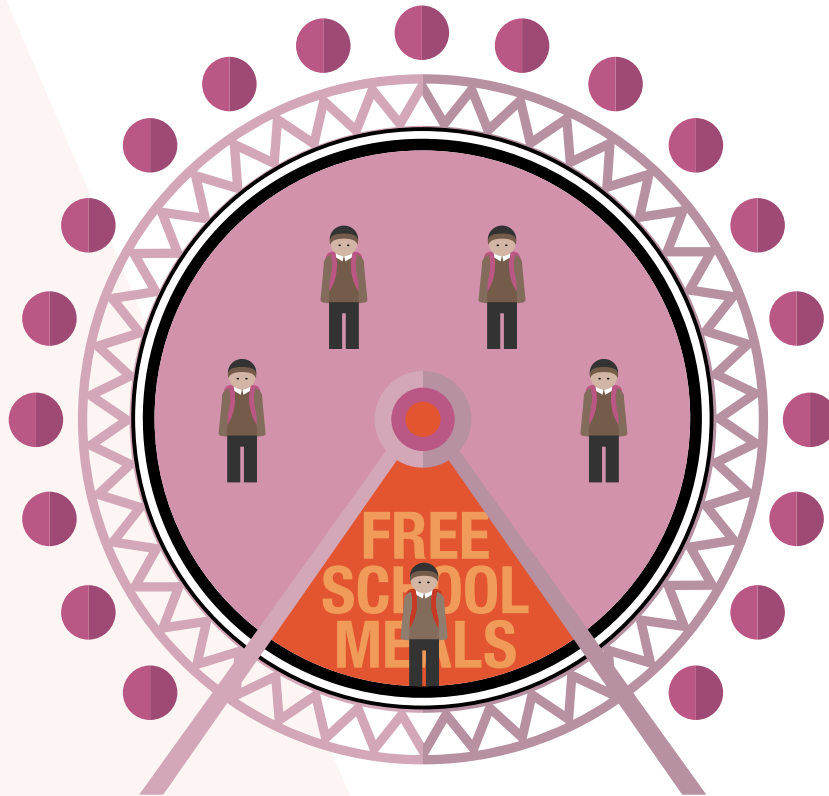


LONDON IS THE **6TH**
RICHEST CITY IN THE WORLD

But 1 in 5 school pupils qualify
for free school meals.

Economically disadvantaged
young people are less likely to visit
an exhibition or attend an event at a
museum/gallery than their peers.



0.5M

children below the
age of 20 in London
live below the
poverty line.

80% of

children from the
richest homes are
read to every day.

But only **40%**

of children from the
poorest homes are
read to every day.

**WHY IS CULTURAL ENGAGEMENT
AMONG ECONOMICALLY
DISADVANTAGED YOUTH
DISPROPORTIONATELY LOW?**

How can we support
greater engagement in
cultural activity for all
young Londoners?

Can we ensure family
income does not
determine access
to culture?