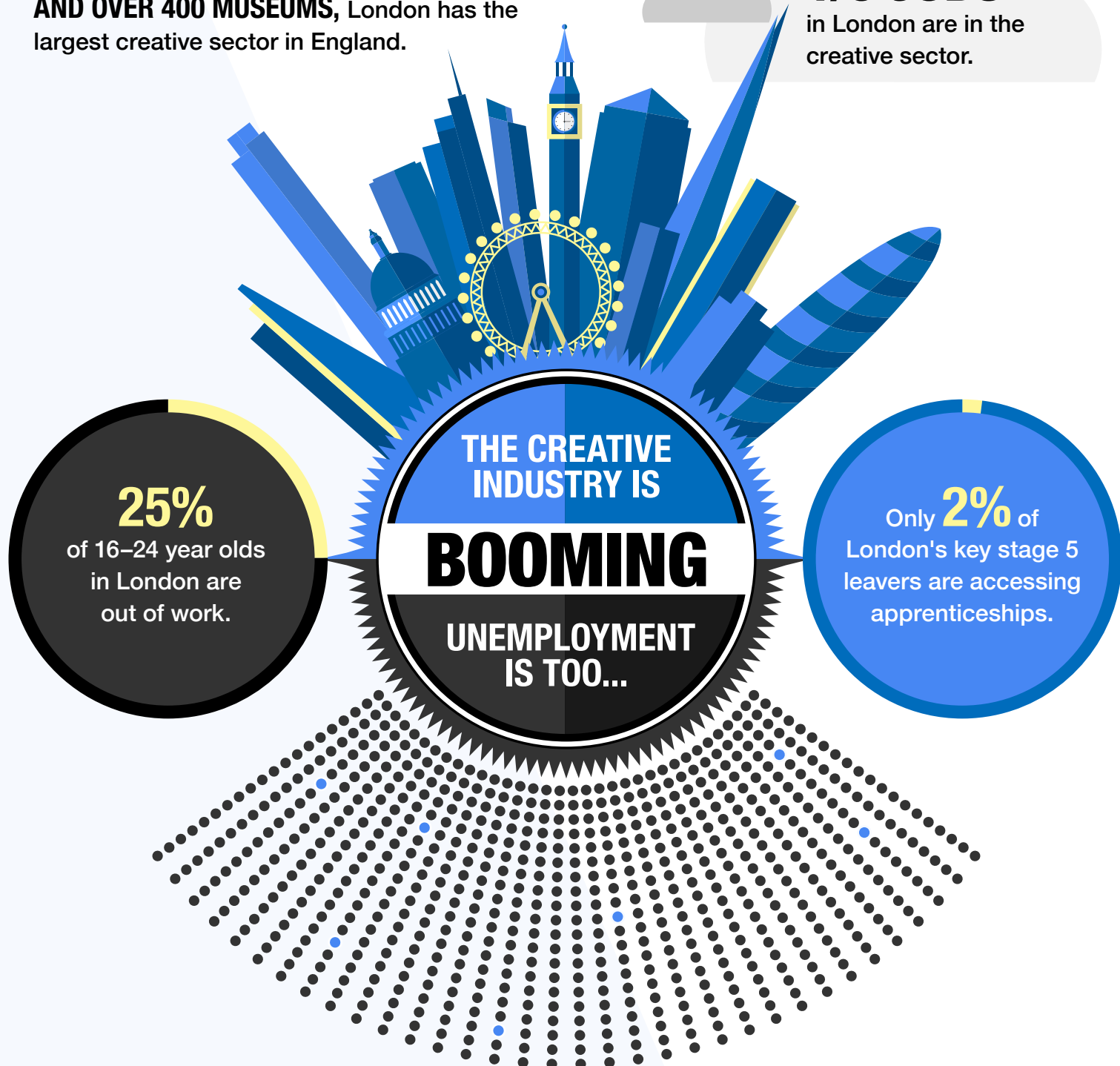


ENTRY TO EMPLOYMENT

WITH HUNDREDS OF ARTS ORGANISATIONS AND OVER 400 MUSEUMS, London has the largest creative sector in England.

1/6 JOBS
in London are in the creative sector.



HOW DO WE ATTRACT AND FACILITATE YOUNG LONDONERS INTO CREATIVE CAREERS?

Can we ensure all young people benefit from the growth and employment opportunity in creative and cultural industries?

Can we break down existing barriers to secure greater diversity within London's creative and cultural sectors?